

以人为本 质量为先 信誉为重 服务为诚

People-oriented quality is the first priority,Reputation is the most important service for sincerity

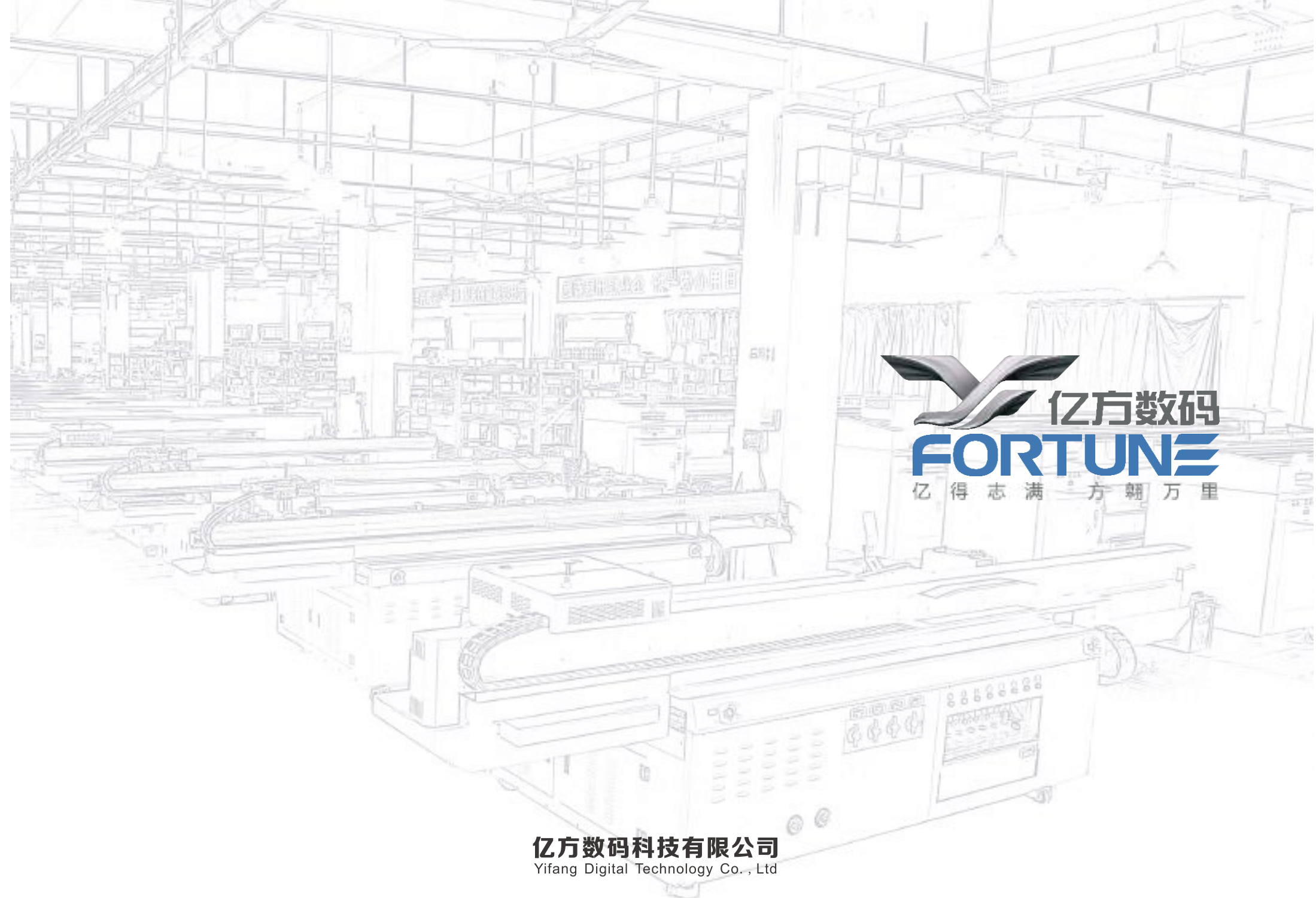
亿方数码科技有限公司

Yifang Digital Technology Co., Ltd

地址:东莞市万江区西城路骏利工业园三栋

Tel:+86-769-8130 9258 Fax:+86-769-8130 6599

E-mail:info@yfdigital.com Web:www.yfdigital.com



亿方数码科技有限公司

Yifang Digital Technology Co., Ltd



COMPANY PROFILE 公司简介

东莞市亿方数码科技有限公司是一家拥有自主知识产权，专业研发、生产与销售数字喷墨印刷设备的高薪科技企业，公司建筑面积达15000m²，现有员工200余人，汇集了全国数码喷墨行业的优秀人才。核心研发团队人员拥有15年行业经验，共同打造了写真机、UV平板机、卷材胶辊机、热升华工业直喷机、乳胶环保打印机、喷绘机六大产品系列。为广告、数码3C产品、玻璃、瓷砖、皮革彩印、数码印花、装饰建材等多个行业提供了成熟的应用解决方案。产品远销欧洲、美洲、中东、非洲、东南亚、等50多个国家和地区，树立了良好的客户口碑和品牌形象。

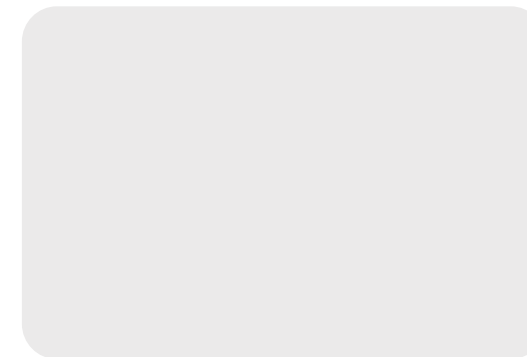
公司始终坚持以人为本、质量为先、信誉为重、服务为诚的经营理念，打造数码打印行业的优秀团队，做行业内稳定高品质的数码打印设备，更好地实现客户价值！让产品覆盖全球！

Dongguan Yifang Digital Technology Co., Ltd. is a high-tech enterprise with independent intellectual property rights, professional R&D, production and sales of digital inkjet printing machines. The company covers an area of 15,000 square meters, has more than 200 employees, The core team has 15 years of industry experience, We develop series of products: Digital Inkjet Printer, UV flatbed, UV roll to roll, Sublimation Direct Printing Machine which have provide a mature application solutions for advertising, digital 3C products, glass, tiles, leather, textile, decorative building materials and etc. Our products are exported to Europe, the Middle East, Africa, Southeast Asia, China, more than 50 countries and regions, and establish a good customer reputation and brand image.

The company always adhere to the people-oriented, quality first, reputation as the most important, service for sincerity, to create a digital printing industry's outstanding team, to do the industry stable high-quality digital printing equipment. Make our products famous all over the world.

打造数码打印
行业的优秀团队
CREATING EXCELLENT
TEAM IN THE DIGITAL
PRINTING INDUSTRY

ABOUT US
关于我们
>>>



我们的企业愿景：
彩绘世界 绿色未来
CORPORATE VISION:
PRINT WORLD
GREEN FUTURE

COMPANY CULTURE 企业文化 >>>



亿方团队
FORTUNE Team



代理商年会
Agents Celebration



参观工厂
Visit factory



上海展会
Shanghai Exhibition



拓展训练
Outdoor Training



展会宣传
Exhibition publicity

机型: YF-2512G/YF-3220G UV平板机 UV Flatbed Printer

机器简介

Introduction of the machine

- ◆ 多种喷头配置, 可选理光、柯尼卡喷头
A variety of print head configuration, Ricoh, Konica
- ◆ 高精度自动测高系统
Automatic height detection system
- ◆ 灵敏的小车防撞系统
Anti-collision system
- ◆ 智能恒温墨路系统
Intelligent constant temperature ink system
- ◆ 采用LED冷温固化技术, 更长使用寿命, 更低能耗
LED UV water cooling system, high performance, low energy consumption
- ◆ 智能墨水液位报警提示系统
Intelligent ink level alarm system



图片参考: YF-2512G

行业应用

Industry Application



电子3C
Electronic



KT板
KT Board



标识标牌
Signage



亚克力灯箱
Acrylic



背景墙
Background Wall



礼盒
Gift Box

机器参数 Machine parameters

机型/Model		YF-2512G UV 平板机 YF-2512G UV Flatbed Printer			YF-3220G UV 平板机 YF-3220G UV Flatbed Printer		
喷头/Printhead		Ricoh GEN5灰度级压电喷头 Ricoh GEN5 Industrial Grayscale Print Head			Ricoh GEN5灰度级压电喷头 Ricoh GEN5 Industrial Grayscale Print Head		
喷头数量/Print Head number		2-8			2-8		
打印模式/Print Mode		4C/6C、4C/6C+W、4C/6C+W+V、2*4C/6C+W、3*4C					
打印尺寸/Print Width		2500mm x 1200mm			3200mm x 2000mm		
打印速度 Print Speed (sqm/h)	模式 Print Mode	4C	2*4C	3*4C	4C	2*4C	3*4C
	草图 4PASS	22 m ² /h	44 m ² /h	66 m ² /h	24 m ² /h	48 m ² /h	72 m ² /h
	标准 6PASS	18 m ² /h	36 m ² /h	54 m ² /h	20 m ² /h	40 m ² /h	60 m ² /h
	高精 8PASS	14 m ² /h	28 m ² /h	42 m ² /h	16 m ² /h	32 m ² /h	48 m ² /h
打印分辨率/Print Resolution		720*1800DPI					
介质类型 Media Type		玻璃、亚克力、木板、瓷砖、金属板、PVC板、发泡板、3C产品、皮料等材料 Glass, Acrylic, Wood, Ceramic, Metal Sheet, PVC Sheet, Plastic, 3C product and etc.					
介质厚度 Media Thickness		材料厚度≤100mm; 车头升降≤100mm Max. 100 mm					
墨水类型 Ink Type		LED环保型UV墨水(不含VOC) UV Curing Ink (None VOC)					
特殊墨水 Special Ink		LED白色墨水或透明光油可选 Optional White Ink or Varnish					
固化系统 Curing System		LED灯固化系统 LED Curing System					
输入格式/File Format		TIFF/PDF/JPES/EPS					
RIP软件 RIP		Photoprint/Onyx/Caldera/Colorget					
数据传送接口/Data Connector		USB2.0					
输入电源 Power		220VAC(±10%) 单相, 50/60HZ 220VAC(±10%) Single Phase, 50/60 HZ					
机器功耗/Power Consumption		5.5KW			6.0KW		
机器尺寸/净重Machine Size/N.W.		4.75m(L)*2.1m(W)*1.4m(H) /1550KG			5.4m(L)*2.95m(W)*1.47m(H) /2300KG		
包装尺寸/毛重Packing Size/G.W.		4.9m(L)*2.28m(W)*1.75m(H) /1650KG			5.8m(L)*3.2m(W)*1.75m(H) /2400KG		
环境要求 Environment Requirement		独立、洁净、低尘、少光照、通风良好的工作间环境温度: 20°C - 28°C, 相对湿度: 40% - 60% seperated, clean, low dust, well-ventilated, environmental temperature: 20°C-28°C relative humidity: 40%-60%					

注: 以上技术参数如有变动恕不另行通知, 以实际设备为准。
Above specification will be changeable without notice

机型：YF-2512G/YF-3220G 磁悬浮UV平板机 Meglev UV Flatbed Printer

机器简介

Introduction of the machine

- ◆ 配置理光G6喷头
Ricoh Gen6 Print Head
- ◆ 精度较G5提高40%
Precision is 40% higher
- ◆ 速度较G5提升100%
Speed is 100% faster than G5
- ◆ 采用 LED 冷温固化技术
Use LED cooling system
- ◆ 使用寿命更长 能耗更低
Longer service life and lower energy consumption
- ◆ 高精度自动测高系统
High precision automatic height detection system
- ◆ 小车移动速度最快可达到2000mm/S
Maximum speed up to 2000mm/S
- ◆ 采用进口磁悬浮运动模组
Imported magnetic levitation motion module



图片参考：YF-2512G磁悬浮

行业应用

Industry Application



电子3C
Electronic



KT板
KT Board



标识标牌
Signage



亚克力灯箱
Acrylic



背景墙
Background Wall



礼盒
Gift Box

机器参数 Machine parameters

机型/Model		YF-2512G/K 磁悬浮UV 平板机 YF-2512G/K Meglev UV Flatbed Printer				YF-3220G/K 磁悬浮UV 平板机 YF-3220G/K Meglev UV Flatbed Printer			
喷头/Printhead		Ricoh GEN6灰度级压电喷头 Ricoh GEN6 Industrial Grayscale Print Head				Ricoh GEN6灰度级压电喷头 Ricoh GEN6 Industrial Grayscale Print Head			
喷头数量/Print Head number		2-8				2-8			
打印模式/Print Mode		4C/6C、4C/6C+W、4C/6C+W+V、2*4C/6C+W、3*4C、4*4C							
打印尺寸/Print Width		2500mm x 1200mm				3200mm x 2000mm			
打印速度 Print Speed (sqm/h)	模式 Print Mode	4C	2*4C	3*4C	4*4C	4C	2*4C	3*4C	4*4C
	草图 4PASS	32 m ² /h	64 m ² /h	96 m ² /h	128 m ² /h	36 m ² /h	72 m ² /h	108 m ² /h	144 m ² /h
	标准 6PASS	26 m ² /h	52 m ² /h	78 m ² /h	104 m ² /h	30 m ² /h	60 m ² /h	90 m ² /h	120 m ² /h
	高精 8PASS	20 m ² /h	40 m ² /h	60 m ² /h	80 m ² /h	24 m ² /h	48 m ² /h	72 m ² /h	96 m ² /h
打印分辨率/Print Resolution		720*1800 DPI							
介质类型 Media Type		玻璃、亚克力、木板、瓷砖、金属板、PVC板、发泡板、3C产品、皮料等材料 Glass,Acrylic, Wood, Ceramic, Metal Sheet, PVC Sheet, Plastic,3C product and etc.							
介质厚度 Media Thickness		材料厚度≤100mm;车头升降≤100mm Max.100 mm							
墨水类型 Ink Type		LED环保型UV墨水(不含VOC) UV Curing Ink (None VOC)							
特殊墨水 Special Ink		LED白色墨水或透明光油可选 Optional White Ink or Varnish							
固化系统 Curing System		LED灯固化系统 LED Curing System							
输入格式/File Format		TIFF/PDF/JPES/EPS							
RIP软件 RIP		Photoprint/Onyx/Caldera/Colorget							
数据传送接口/Data Connector		USB2.0							
输入电源 Power		220VAC(±10%) 单相, 50/60HZ 220VAC(±10%) Single Phase, 50/60 HZ							
机器功耗/Power Consumption		5.7KW				6.1KW			
机器尺寸/净重Machine Size/N.W.		4.75m(L)*2.1m(W)*1.4m(H)/1550KG				5.4m(L)*2.95m(W)*1.47m(H)/2300KG			
包装尺寸/毛重Packing Size/G.W.		4.9m(L)*2.28m(W)*1.75m(H)/1650KG				5.8m(L)*3.2m(W)*1.75m(H) /2400KG			
环境要求 Environment Requirement		独立、洁净、低尘、少光照、通风良好的工作间环境温度:20°C - 28°C, 相对湿度:40% - 60% seperated, clean, low dust, well-ventilated,environmental temperature:20°C-28°C relative humidity:40%-60%							

注：以上技术参数如有变动恕不另行通知，以实际设备为准。
Above specification will be changeable without notice

机型: YF-2513F 磁悬浮UV平板机 Meglev UV Flatbed Printer

机器简介

Introduction of the machine

- ◆ 配置理光G6喷头
Ricoh Gen6 Print Head
- ◆ 高精度自动测高系统
Automatic height detection system
- ◆ 灵敏的小车防撞系统
Anti-collision system
- ◆ 智能恒温墨路系统
Intelligent constant temperature ink system
- ◆ 采用LED冷温固化技术, 更长使用寿命, 更低能耗
LED UV water cooling system, higher performance, lower energy consumption
- ◆ 智能墨水液位报警提示系统
Intelligent ink level alarm system



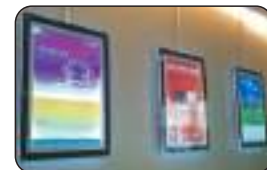
图片参考: YF2513F磁悬浮

行业应用

Industry Application



标识标牌
Signage



亚克力灯箱
Acrylic



手机壳
Phone Case



木板
Wood



电器面板
Electrical panel



KT板
KT Board

机器参数 Machine parameters

机型/Model	YF-2513F磁悬浮UV 平板机 YF-2513F Meglev UV Flatbed Printer	
喷头/Printhead	Ricoh GEN6灰度级压电喷头 Ricoh GEN6 Industrial Grayscale Print Head	
喷头数量/Print Head number	2-8	
打印模式/Print Mode	4C/6C/4C+W/6C+W/4C+W+V/6C+W+V	
打印尺寸/Print Width	2500mm x 1200mm	
打印速度 Print Speed (sqm/h)	草图 4PASS	32 m ² /h
	标准 6PASS	26 m ² /h
	高精 8PASS	20 m ² /h
打印分辨率/Print Resolution	720*1800 DPI	
介质类型 Media Type	玻璃、亚克力、木板、瓷砖、金属板、PVC板、发泡板、3C产品、皮料等材料 Glass, Acrylic, Wood, Ceramic, Metal Sheet, PVC Sheet, Plastic, 3C product and etc.	
介质厚度 Media Thickness	材料厚度≤100mm; 车头升降≤100mm Max.100 mm	
墨水类型 Ink Type	LED环保型UV墨水(不含VOC) UV Curing Ink (None VOC)	
特殊墨水 Special Ink	LED白色墨水或透明光油可选 Optional White Ink or Varnish	
固化系统 Curing System	LED灯固化系统 LED Curing System	
输入格式/File Format	TIFF/PDF/JPEG/PS/EPS	
RIP软件 RIP	Photoprint/Onyx/Caldera/Colorjet	
数据传送接口/Data Connector	USB2.0	
输入电源 Power	220VAC(±10%) 单相, 50/60HZ 220VAC(±10%) Single Phase, 50/60 HZ	
机器功耗/Power Consumption	5.7KW	
机器尺寸/净重Machine Size/	4.5m(L)*2.0m(W)*1.4m(H)/1500KG	
包装尺寸/毛重Packing Size/	4.9m(L)*2.28m(W)*1.75m(H)/1600KG	
环境要求 Environment Requirement	独立、洁净、低尘、少光照、通风良好的工作间环境温度:20°C - 28°C, 相对湿度:40% - 60% seperated, clean, low dust, well-ventilated, environmental temperature:20°C-28°C relative humidity:40%-60%	

注: 以上技术参数如有变动恕不另行通知, 以实际设备为准。
Above specification will be changeable without notice

机型: YF-2513F UV平板机 UV Flatbed Printer

机器简介

Introduction of the machine

- ◆ 多种喷头配置, 可选理光、东芝CE4
A variety of print head configuration Ricoh, Toshiba CE4
- ◆ 高精度自动测高系统
Automatic height detection system
- ◆ 灵敏的小车防撞系统
Anti-collision system
- ◆ 智能恒温墨路系统
Intelligent constant temperature ink system
- ◆ 采用LED冷温固化技术, 更长使用寿命, 更低能耗
LED UV water cooling system, higher performance, lower energy consumption
- ◆ 智能墨水液位报警提示系统
Intelligent ink level alarm system



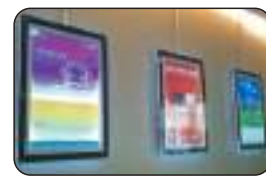
图片参考: YF-2513F

行业应用

Industry Application



标识标牌
Signage



亚克力灯箱
Acrylic



手机壳
Phone Case



木板
Wood



电器面板
Electrical panel



KT板
KT Board

机器参数 Machine parameters

机型/Model		YF-2513F UV 平板机 YF-2513F UV Flatbed Printer			
喷头/Printhead		Ricoh GEN5灰度级压电喷头 Ricoh GEN5 Industrial Grayscale Print Head		东芝CE4喷头 Toshiba CE4 print head	
喷头数量/Print Head number		2-8			
打印模式/Print Mode		4C/6C/4C+W/6C+W/4C+W+V/6C+W+V			
打印尺寸/Print Width		2500mm x 1200mm			
打印速度 Print Speed (sqm/h)	草图 4PASS	22 m ² /h	/		
	标准 6PASS	18 m ² /h	标准 8PASS	8 m ² /h	
	高精 8PASS	14 m ² /h	高精 12PASS	6 m ² /h	
打印分辨率/Print Resolution		720*600 DPI		600*1200 DPI	
介质类型 Media Type		玻璃、亚克力、木板、瓷砖、金属板、PVC板、发泡板、3C产品、皮料等材料 Glass, Acrylic, Wood, Ceramic, Metal Sheet, PVC Sheet, Plastic, 3C product and etc.			
介质厚度 Media Thickness		材料厚度≤100mm; 车头升降≤100mm Max.100 mm			
墨水类型 Ink Type		LED环保型UV墨水(不含VOC) UV Curing Ink (None VOC)			
特殊墨水 Special Ink		LED白色墨水或透明光油可选 Optional White Ink or Varnish			
固化系统 Curing System		LED灯固化系统 LED Curing System			
输入格式/File Format		TIFF/PDF/JPEG/EPS			
RIP软件 RIP		Photoprint/Onyx/Caldera/Colorget		Unitedfancy/photoprint	
数据传送接口/Data Connector		USB2.0			
输入电源 Power		220VAC(±10%) 单相, 50/60HZ 220VAC(±10%) Single Phase, 50/60 HZ			
机器功耗/Power Consumption		4.8KW			
机器尺寸/净重Machine Size/N.W.		4.5m(L)*2.0m(W)*1.4m(H)/1500KG			
包装尺寸/毛重Packing Size/G.W.		4.9m(L)*2.28m(W)*1.75m(H)/1600KG			
环境要求 Environment Requirement		独立、洁净、低尘、少光照、通风良好的工作间环境温度: 20°C - 28°C, 相对湿度: 40% - 60% seperated, clean, low dust, well-ventilated, environmental temperature: 20°C-28°C relative humidity: 40%-60%			

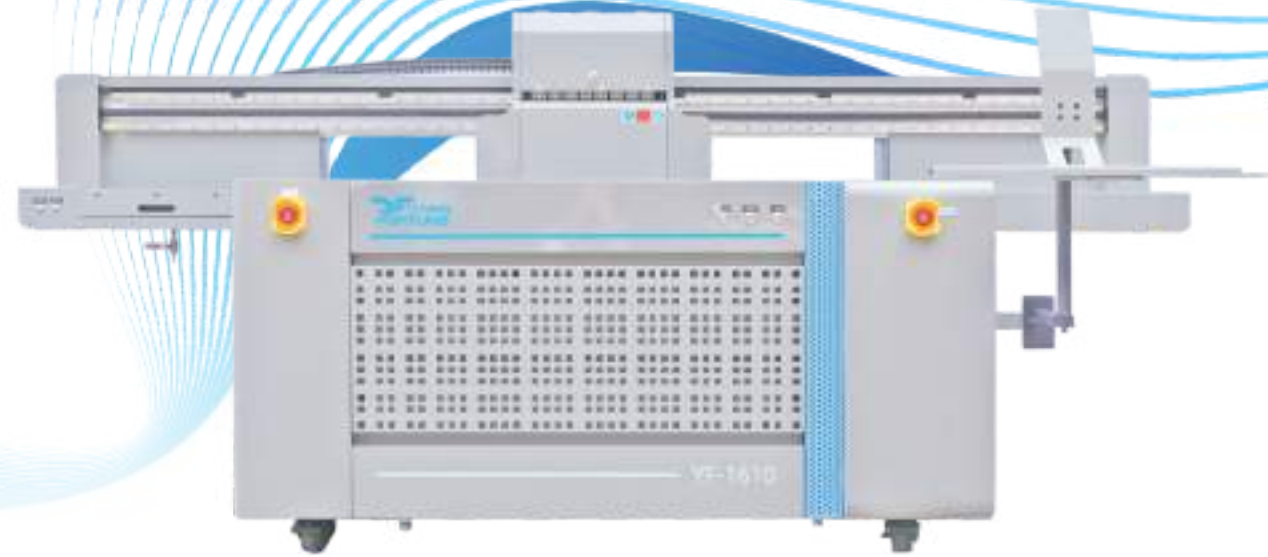
注: 以上技术参数如有变动恕不另行通知, 以实际设备为准。
Above specification will be changeable without notice

机型：YF-1610T UV平板机 UV Flatbed Printer

机器简介

Introduction of the machine

- ◆ 采用东芝CE4和理光Gen 5工业级喷头、高精度稳定输出
Using Toshiba CE4 and Ricoh Gen 5 industrial print head, high precision and stable output
- ◆ 高精度全自动测高系统、高灵敏喷头防撞功能
High-precision automatic height detection system and high-sensitive anti-collision system
- ◆ 白、彩光油同步输出
White&Color&Varnish syn output
- ◆ 采用 Photoprint 色彩管理软件、可处理多批订单、保持颜色统一
Use Photoprint RIP software to process multiple orders and maintain color uniformity
- ◆ 最高打印高度为15CM,广泛应用于个性化定制、工艺品
The highest printing height is 15CM, widely used in personalized customization and crafts.



图片参考：YF-1610

行业应用

Industry Application



电子3C
Electronic



KT板
KT Board



标识标牌
Signage



亚克力灯箱
Acrylic



背景墙
Background Wall



礼盒
Gift Box

机器参数 Machine parameters

机型/Model	YF-1610T UV平板机 YF-1610T UV Flatbed Printer			
喷头/Printhead	Ricoh GEN5灰度级压电喷头 Ricoh GEN5 Industrial Grayscale Print Head		东芝CE4喷头 Toshiba CE4 print head	
喷头数量/Print Head number	2-8			
打印模式/Print Mode	4C/6C/4C+W/6C+W/4C+W+V/6C+W+V			
打印尺寸/Print Width	1600mm x 1000mm			
打印速度 Print Speed (sqm/h)	草图 4PASS	20 m ² /h	7 m ² /h	
	标准 6PASS	16 m ² /h	5 m ² /h	标准 8PASS 8 m ² /h
	高精 8PASS	12 m ² /h	3 m ² /h	高精 12PASS 6 m ² /h
打印分辨率/Print Resolution	720*600 DPI		600*1200 DPI	
介质类型 Media Type	玻璃、亚克力、木板、瓷砖、金属板、PVC板、发泡板、3C产品、皮料等材料 Glass,Acrylic, Wood, Ceramic, Metal Sheet, PVC Sheet, Plastic,3C product and etc.			
介质厚度 Media Thickness	材料厚度≤150mm Max 150mm			
墨水类型 Ink Type	LED环保型UV墨水(不含VOC) UV Curing Ink (None VOC)			
特殊墨水 Special Ink	LED白色墨水或透明光油可选 Optional White Ink or Varnish			
固化系统 Curing System	LED灯固化系统 LED Curing System			
输入格式/File Format	TIFF/PDF/JPEG/EPS			
RIP软件 RIP	Photoprint/Onyx/Caldera/Colorget		Unitedfancy/photoprint	
数据传送接口/Data Connector	USB2.0		USB3.0	
输入电源 Power	220VAC(±10%) 单相, 50/60HZ 220VAC(±10%) Single Phase, 50/60 HZ			
机器功耗/Power Consumption	2.8KW			
机器尺寸/净重Machine Size/	3.2m (L) *1.7m (W) *1.4m (H)/1100KG			
包装尺寸/毛重Packing Size/	3.5m (L) *2m (W) *1.6m (H)/1180KG			
环境要求 Environment Requirement	独立、洁净、低尘、少光照、通风良好的工作间环境温度:20°C - 28°C, 相对湿度:40% - 60% seperated, clean, low dust, well-ventilated,environmental temperature:20°C-28°C relative humidity:40%-60%			

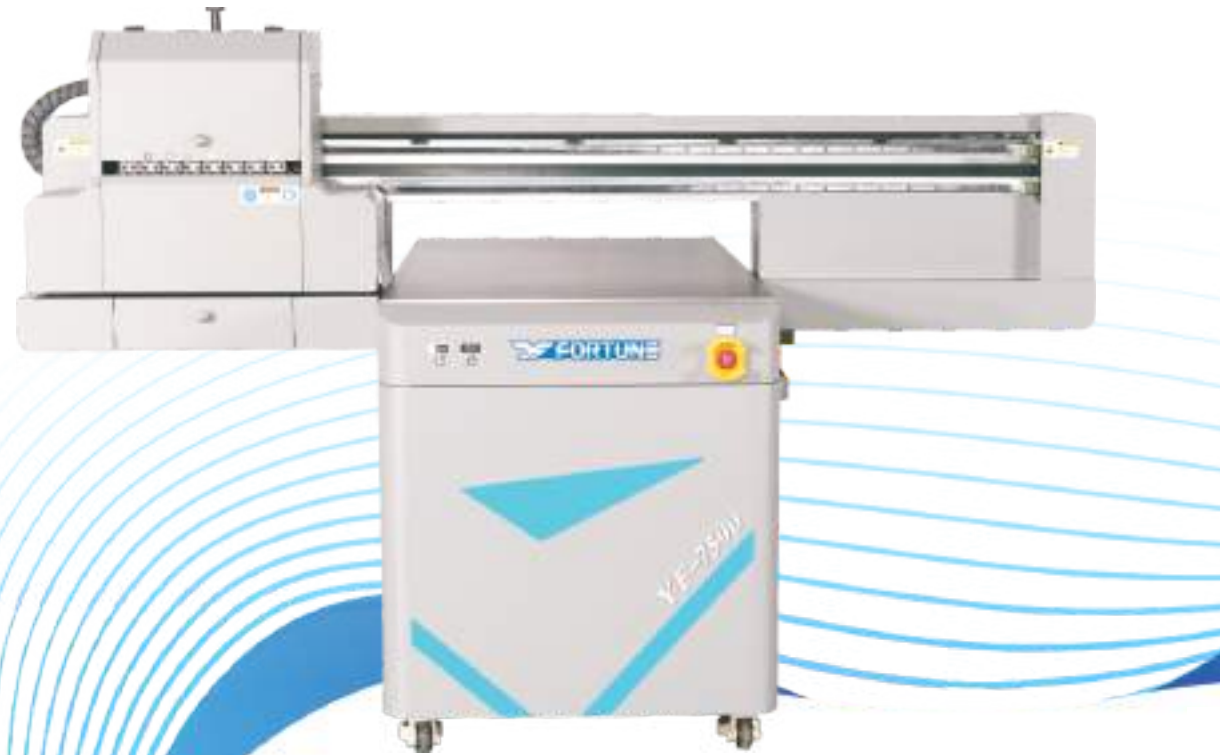
注：以上技术参数如有变动恕不另行通知，以实际设备为准。
Above specification will be changeable without notice

机型: YF-7590T UV平板机 UV Flatbed Printer

机器简介

Introduction of the machine

- ◆ 多种喷头配置, 可选理光、东芝喷头
Ricoh、Toshiba print head optional
- ◆ 高精度自动测高系统
Automatic height detection system
- ◆ 灵敏的小车防撞系统
Anti-collision system
- ◆ 智能恒温墨路系统
Intelligent constant temperature ink system
- ◆ 采用LED冷温固化技术, 更长使用寿命, 更低能耗
LED UV water cooling system, higher performance, and lower energy consumption
- ◆ 智能墨水液位报警提示系统
Intelligent ink level alarm system
- ◆ 圆柱打印支架选配
Cylinder material holder is optional



图片参考: YF-7590

行业应用

Industry Application



手机壳
Phone Case



KT板
KT Board



标识标牌
Signage



亚克力灯箱
Acrylic



酒瓶
Bottle



礼盒
Gift Box

机器参数 Machine parameters

机型/Model		YF-7590T UV平板机 YF-7590T UV Flatbed Printer			
喷头/Printhead		理光G5I喷头 Ricoh Gen5I printhead		东芝CE4喷头 Toshiba CE4 print head	
喷头数量/Print Head number		2-8			
打印模式/Print Mode		4C/6C/4C+W/6C+W/4C+W+V/6C+W+V			
打印尺寸/Print Width		750mm*900mm			
打印速度 Print Speed (sqm/h)	草图 4PASS	6 m ² /h		/	
	标准 6PASS	4 m ² /h		标准 6PASS	7 m ² /h
	高精 8PASS	2.5 m ² /h		高精 8PASS	5 m ² /h
打印分辨率/Print Resolution		720*600 DPI		600*1200 DPI	
介质类型 Media Type		玻璃、亚克力、木板、瓷砖、金属板、PVC板、发泡板、3C产品、皮料等材料 Glass, Acrylic, Wood, Ceramic, Metal Sheet, PVC Sheet, Plastic, 3C product and etc.			
介质厚度 Media Thickness		材料厚度≤150mm Max 150mm			
墨水类型 Ink Type		LED环保型UV墨水(不含VOC) UV Curing Ink (None VOC)			
特殊墨水 Special Ink		LED白色墨水或透明光油可选 Optional White Ink or Varnish			
固化系统 Curing System		LED灯固化系统 LED Curing System			
输入格式/File Format		TIFF/PDF/JPEG/EPS			
RIP软件 RIP		Photoprint/Onyx/Caldera/Colorget		Unitedfancy/photoprint	
数据传送接口/Data Connector		USB2.0		USB3.0	
输入电源 Power		220VAC(±10%) 单相, 50/60HZ 220VAC(±10%) Single Phase, 50/60 HZ			
机器功耗/Power Consumption		2.5KW			
机器尺寸/Machine Size		2.24m(L)*1.79m(W)*1.44m(H)			
包装尺寸/Packing Size		2.34m(L)*1.90m(W)*1.55m(H)			
环境要求 Environment Requirement		独立、洁净、低尘、少光照、通风良好的工作间环境温度: 20°C - 28°C, 相对湿度: 40% - 60% seperated, clean, low dust, well-ventilated, environmental temperature: 20°C-28°C relative humidity: 40%-60%			

注: 以上技术参数如有变动恕不另行通知, 以实际设备为准。
Above specification will be changeable without notice

机型：YF-3300Z/YF-5000Z UV胶辊机 UV Roll To Roll Printer



参考图案：YF-5000Z

机器简介

Introduction of the machine

- ◆ 多种喷头配置，可选理光、柯尼卡喷头
A variety of print head configuration, Ricoh, Konica
- ◆ 采用四根大直径胶辊同步打印，保证材料不易起皱、跑偏
Installed with four large diameter rubber rollers to ensure th at the material is not easy to wrinkle and run off
- ◆ 采用进口双直线静音导轨，让你在打印过程中享受安静。
Imported dual linear mute guides make less noises during printing
- ◆ 工业级重型架构设计，外观时尚霸气，模块简洁实用
Industrial-grade heavy-duty structure design, more simple and stable
- ◆ 采用五个支撑点平衡支撑胶辊，保证稳定省心
Five support points are used to balance the rubber roller to ensure stability

行业应用

Industry Application



软膜天花
Soft Film



广告布
Flex banner



背景墙
Background Wall



皮革
Leather



灯箱
Light Box



艺术画
Art Painting

机器参数 Machine parameters

机型 Model	YF-3300Z UV胶辊机	YF-3300Z UV Roll To Roll Printer	YF-5000Z UV胶辊机	YF-5000Z UV Roll To Roll Printer
喷头型号 Print Head	理光 Ricoh gen5	理光 Ricoh gen6	理光 Ricoh gen6	
喷头数量 Print Head Number	2-9		2-12	
色彩配置 Print Mode	4C/6C、4C/6C+W、2*4C/6C、3*4C/6C			
打印宽度 Print Width	3200mm		5000mm	
打印速度 PrintSpeed (sqm/h)	草图 4PASS	66 m ² /h	96 m ² /h	100m ² /h
	标准 6PASS	54 m ² /h	78 m ² /h	82 m ² /h
	高精 8PASS	42 m ² /h	60 m ² /h	64 m ² /h
打印分辨率 Print Resolution	720*1800 DPI			
打印材料 Media Type	刀刮布、灯片、软膜、3P布、网格布、墙布、皮革等卷材。 Backlit, Soft film, Light box, 3P cloth, Mesh cloth, Wallpaper, Leather, etc.			
材料厚度 Media Thickness	材料厚度≤5mm Max 5mm			
墨水类型 Ink Type	LED环保型UV墨水（不含VOC）、UV白色墨水、透明光油可选 UV Curing Ink (None VOC), Optional White Ink or Varnish			
固化系统 Curing System	LED灯固化系统 LED Curing System			
输入格式 Film Format	TIFF/PDF/JPES/EPS			
RIP软件 RIP	Photoprint/Onyx/Caldera/Colorget			
数据传送接口 Data Connector	USB2.0			
输入电源 Voltage	220VAC(±10%)单相. 50/60 HZ 220VAC(±10%) Single Phase. 50/60 HZ			
机器功耗 Power	4KW		5KW	
机器尺寸/净重 Machine Size/N.W.	5.4m(L)*1.3m(W)*1.7m(H)		8.2m(L)*2.1m(W)*2.3m(H)	
包装尺寸/毛重 Packing Size/G.W.	5.7m(L)*1.4m(W)*2.0m(H)		8.4m(L)*2.3m(W)*2.8m(H)	
环境要求 Environmental Requirement	独立、洁净、低尘、少光照、通风良好的工作间 环境温度:20°C - 25°C相对湿度: 50% - 60% seperated, clean, low dust, well-ventilated environmental temperature:20°C-25°C relative humidity:50%-60% (Non-condensation)			

注：以上技术参数如有变动恕不另行通知，以实际设备为准。
Above specification will be changeable without notice

机型: YF-1800MH/YF-3200MH 导带机 UV Hybrid Printer

机器简介

Introduction of the machine

- ◆ 智能材料测高系统
Automatic height detection system
- ◆ 高灵敏小车保护装置
Highly sensitive carriage protection device
- ◆ 丰富的打印模式
Various print mode
- ◆ 卷板两用平台
Roll and flatbed platform
- ◆ 工业级重型机架
Industrial grade heavy duty structure
- ◆ 材料定位及上料辅助系统
Material positioning and feeding auxiliary system



参考图案: YF-1800MH

行业应用

Industry Application



背景墙
Background Wall



皮革
Leather



灯箱
Light Box



艺术画
Art Painting



KT板
KT Board



标识标牌
Signage

机器参数 Machine parameters

机型 Model	YF-1800MH 导带机 YF-1800MH UV Hybrid Printer		YF-3200MH导带机 YF-3200MH UV Hybrid Printer		
喷头型号 Print Head	理光G6喷头 Ricoh GEN6 print head				
喷头数量 Print Head Number	2-8				
色彩配置 Print Mode	4C/6C+W+4C/6C	2*4C/6C	4C/6C+W+4C/6C	3*4C/6C	
打印宽幅 Print Width	1800mm		3200mm		
打印速度 PrintSpeed (sqm/h)	草图 4PASS	32 m ² /h	65 m ² /h	34 m ² /h	96 m ² /h
	标准 6PASS	20 m ² /h	40 m ² /h	26 m ² /h	78 m ² /h
	高精 8PASS	17 m ² /h	35 m ² /h	20 m ² /h	60 m ² /h
打印分辨率 Print Resolution	720*1800DPI				
打印材料 Media Type	软膜、刀刮布、3P布、玻璃、瓷砖、亚克力、PVC板等各种卷材及板材 soft film, coated banner, 3P cloth, glass, ceramic, acrylic, PVC board, and all kinds of rolls and etc				
材料厚度 Media Thickness	材料厚度≤50mm MAX≤50mm				
墨水类型 Ink Type	LED环保型UV墨水(不含VOC)、UV白色墨水、透明光油可选 LED environmentally friendly UV ink (none VOC), optional white ink and varnish				
固化系统 Curing System	LED灯固化系统 LED curing light				
输入格式 Film Format	TIFF/PDF/JPES/EPS				
RIP软件 RIP	Photoprint/Onyx/Caldera/Colorget				
数据传送接口 Data Connector	USB2.0				
输入电源 Voltage	220VAC(±10%)单相, 50/60 HZ 220VAC(±10%)single phase, 50/60 HZ				
机器功耗 Power	4KW				
机器尺寸/净重 Machine Size/N.W.	4.1m(L)*1.45m(W)*1.4m(H)		6.1m(L)*1.5m(W)*1.4m(H)		
包装尺寸/毛重 Packing Size/G.W.	4.3m(L)*1.65m(W)*1.6m(H)		6.3m(L)*1.7m(W)*1.8m(H)		
环境要求 Environmental Requirement	独立、洁净、低尘、少光照、通风良好的工作间 环境温度:20°C - 25°C相对湿度: 50% - 60% seperated, clean, low dust, well-ventilated environmental temperature:20°C-25°C relative humidity:50%-60% (Non-condensation)				

注: 以上技术参数如有变动恕不另行通知, 以实际设备为准。
Above specification will be changeable without notice

机型：YF-1800ML 导带机 UV Hybrid Printer

机器简介

Introduction of the machine

- ◆ 智能材料测高系统
Automatic height detection system
- ◆ 高灵敏小车保护装置
Highly sensitive carriage protection device
- ◆ 丰富的打印模式
Various print mode
- ◆ 卷板两用平台
Roll and flatbed platform
- ◆ 实用型轻型机架
Economic machine structure



图片参考：YF-1800ML

行业应用

Industry Application



背景墙
Background Wall



皮革
Leather



灯箱
Light Box



艺术画
Art Painting



KT板
KT Board



标识标牌
Signage

机器参数 Machine parameters

机型 Model	YF-1800ML 导带机 YF-1800ML UV Hybrid Printer		
喷头型号 Print Head	理光G5/G5I/I3200喷头 Ricoh Gen5/Gen5i/EPsi3200		
喷头数量 Print Head Number	2-8		
色彩配置 Print Mode	4C、4C+W、4C+W+V	2*4C	4C+W+4C
打印宽幅 Print Width	1800mm		
打印速度 PrintSpeed (sqm/h)	草图 4PASS	15 m ² /h	30 m ² /h
	标准 6PASS	13 m ² /h	26 m ² /h
	高精 8PASS	10 m ² /h	20 m ² /h
打印分辨率 Print Resolution	720*1800DPI		
打印材料 Media Type	软膜、刀刮布、3P布、玻璃、瓷砖、亚克力、PVC板等各种卷材及板材 soft film, coated banner, 3P cloth, glass, ceramic, acrylic, PVC board, and all kinds of rolls and etc		
材料厚度 Media Thickness	材料厚度≤20mm MAX≤20mm		
墨水类型 Ink Type	LED环保型UV墨水(不含VOC)、UV白色墨水、透明光油可选 LED environmentally friendly UV ink (none VOC)、optional white ink and varnish		
固化系统 Curing System	LED灯固化系统 LED curing light		
输入格式 Film Format	TIFF/PDF/JPES/EPS		
RIP软件 RIP	Photoprint/Onyx/Caldera/Colorget		
数据传送接口 Data Connector	USB2.0		
输入电源 Voltage	220VAC(±10%)单相, 50/60 HZ 220VAC(±10%)single phase, 50/60 HZ		
机器功耗 Power	2.5KW		
机器尺寸/净重 Machine Size/N.W.	3.5m(L)*0.9m(W)*1.5m(H)/1100KG		
包装尺寸/毛重 Packing Size/G.W.	3.65m(L)*1.2m(W)*1.7m(H)/1180KG		
环境要求 Environmental Requirement	独立、洁净、低尘、少光照、通风良好的工作间 环境温度:20°C - 25°C相对湿度: 50% - 60% seperated, clean, low dust, well-ventilated environmental temperature:20°C-25°C relative humidity:50%-60% (Non-condensation)		

注：以上技术参数如有变动恕不另行通知，以实际设备为准。
Above specification will be changeable without notice

机型：YF-3200G UV卷材机 UV Roll To Roll Printer

机器简介

Introduction of the machine

- ◆ 多种打印模式，可选理光、柯尼卡喷头配置
A variety of print head configuration Ricoh, Konica optional
- ◆ 高灵敏小车防撞系统
High sensitive Anti-collision system
- ◆ 进口拖链及高柔电缆，顶级拖链解决方案
Imported chain and high-flex cable, top level drag chain solution
- ◆ 工业级重型机架
Industrial grade heavy duty structure
- ◆ 智能墨水液位报警提示系统
Intelligent ink level alarm system



图片参考：YF-3200G

行业应用

Industry Application



软膜天花
Soft Film



广告布
Flex banner



背景墙
Background Wall



皮革
Leather



灯箱
Light Box



艺术画
Art Painting

机器参数 Machine parameters

机型 Model	YF-3200G UV卷材机 YF-3200G UV Roll To Roll Printer		
喷头型号 Print Head	理光 Ricoh gen5		
喷头数量 Print Head Number	2-12		
色彩配置 Print Mode	4C、4C+W+V	2*4C	
打印宽度 Print Width	3200mm		
打印速度 PrintSpeed (sqm/h)	草图 4PASS	22 m ² /h	44 m ² /h
	标准 6PASS	18 m ² /h	36 m ² /h
	高精 8PASS	14 m ² /h	28 m ² /h
打印分辨率 Print Resolution	720*1800 DPI		
打印材料 Media Type	刀刮布、灯片、软膜、3P布、网格布、墙布等卷材。 Backlit, Soft film, Light box, 3P cloth, Mesh cloth, Wallpaper, Leather, etc.		
材料厚度 Media Thickness	材料厚度≤3mm Max 5mm		
墨水类型 Ink Type	LED环保型UV墨水(不含VOC)、UV白色墨水、透明光油可选 UV Curing Ink (None VOC), Optional White Ink or Varnish		
固化系统 Curing System	LED灯固化系统 LED Curing System		
输入格式 Film Format	TIFF/PDF/JPES/EPS		
RIP软件 RIP	Photoprint/Colorget/Onyx/Caldera		
数据传送接口 Data Connector	USB3.0		
输入电源 Voltage	220VAC(±10%)单相 50/60 HZ 220VAC(±10%) Single Phase. 50/60 HZ		
机器功耗 Power	3KW		
机器尺寸/净重 Machine Size/N.W.	5.0m(L)*1.1m(W)*1.6m(H)/1850KG		
包装尺寸/毛重 Packing Size/G.W.	5.1m(L)*1.2m(W)*1.7m(H)/1930KG		
环境要求 Environmental Requirement	独立、洁净、低尘、少光照、通风良好的工作间 环境温度:20°C - 25°C相对湿度: 50% - 60% seperated, clean, low dust, well-ventilated environmental temperature:20°C-25°C relative humidity:50%-60% (Non-condensation)		

注：以上技术参数如有变动恕不另行通知，以实际设备为准。
Above specification will be changeable without notice

机型：YF-3204SG 喷绘机 Solvent Printer

机器简介

Introduction of the machine

- ◆ 工业级全钢喷嘴喷头，110V高频喷射，喷头带有内部墨水循环功能，内部金属构造，可以拆卸清洗及部件更换，使用寿命长达8年，维护成本极低，精度和饱和度遥遥领先。
Industrial grade all steel print head, 110V high frequency injection, which is installed internal ink circulation, internal metal instruction. It can be disassembled for cleaning and component replacement, with 8 years lifetime extremely low maintenance costs. Leading color saturation & precision.
- ◆ 采用双直线导轨设计，全铝合金精铣横梁，高精度机身平台和专利小车制造，实现了真正的三位一体上的精度体现，保证了机器出图的精度。
Adopted double linear guide, all-aluminum alloy fine-milling beam, high-precision frame, platform and patented carriage manufacturing, realizing the true trinity precision, ensuring the precision of machine printing.
- ◆ 独立分色喷嘴加热系统，工业级的负压系统，配上喷头自动墨水循环的技术，保证了墨水的流畅性，有效的防止换季、早晚温度的变化导致的断墨，极大的节省了客户的使用成本，真正实现了不间断打印。
Independent color separation print head heating system, industrial grade negative pressure system, coupled with automatic ink circulation technology of the print head to ensure ink fluency, effectively prevent the ink breakage caused by the change of season, morning and evening temperature different, which greatly saves the cost of the customer's use and has truly achieved uninterrupted printing.
- ◆ 重型的机架设计，超强稳定，高端大气。
Heavy-duty structure design, more simple and stable



图片参考：YF-3204G

行业应用 Industry Application



PP背胶
PP



车贴
Vinyl



广告布
Advertising Cloth

机器参数 Machine parameters

机型 Model		YF-3204SG 喷绘机 YF-3204SG Solvent Printer	YF-5306SG喷绘机 YF-5306SG Solvent Printer
喷头型号 Print Head		星光喷头 Starfire 1024	
色彩配置 Print Mode		4C	
打印宽幅 Print Width		3.2m	5.3m
打印速度 Print Speed (sqm/h)	草图 2PASS	248m ² /h	440 m ² /h
	标准 3PASS	178m ² /h	290 m ² /h
	高精 4PASS	138m ² /h	220 m ² /h
输入格式 File Format		BMP/TIFF/EPS/PDF/AI/JPEG	
打印材料 Media Type		卷对卷自动上料自动收布，前后加热，红外风干 Automatic roll to roll feeding and collection, Heating front and back, Infrared drying	
RIP软件 RIP		蒙泰6.0(选配PHOTOPRINT) Maintop 6.0, (Photoprint optional)	
控制平台及接口 Operating Platform and Connector		WIN7 32/64位操作系统，USB2.0端口 WIN7 32/64 Bit Workstation, USB 2.0 Connector	
电源及工作环境 Power Supply and Environment		不间断电源AC220V/50HZ±10%， Temperature 20°C-30°C. Humidity60%-70% UPS AC220V/50HZ±10%， Temperature 20°C-30°C. Humidity60%-70%	
毛重/净重 Gross Weight/Net Weight		1380KG/1035KG	3200KG/2700KG
包装尺寸 Packing Size		4.9m(L)*1.1m(W)*1.7m(H)	7.6m(L)*1.15m(W)*1.85m(H)

注：以上技术参数如有变动恕不另行通知，以实际设备为准。
Above specification will be changeable without notice

机型：YF-3200G 环保乳胶机 Latex Printer

机器简介

Introduction of the machine

- ◆ 完整成熟的环保打印方案 Completely and mature environmental printing solution
- ◆ 可实现无涂层打印 Uncoated printing
- ◆ 采用环保压电乳胶墨水，经过SGS认证墨水 Environmental protection piezo electric latex ink, certificated by SGS
- ◆ 理光工业生产模式、爱普生个性化定制模式 Ricoh industrial production mode, Epson personality customization mode



图片参考：YF-3200G

行业应用

Industry Application



车贴
Vinyl



窗帘
Curtain



灯饰
Light Decoration



隔断
Partition



烫印膜
Hot Stamping Film



竹帘
Bamboo Curtains

机器参数 Machine parameters

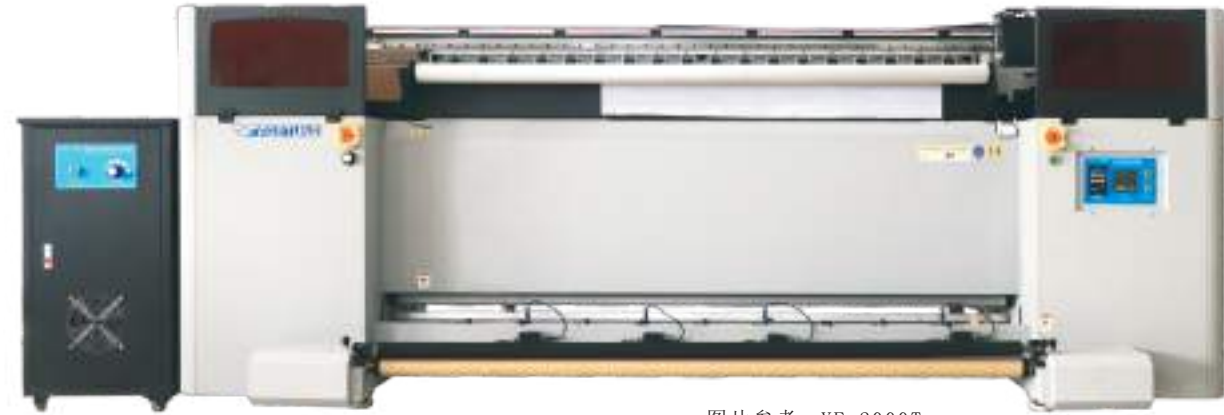
机型 Model	YF-3200G 环保乳胶机 YF-3200G Latex Printer	YF-1702环保乳胶机 YF-1702 Latex Printer
喷头型号 Print Head	理光 RICOH GEN5	Epson I3200
喷头数量 Print Head Number	2-8	2
色彩配置 Print Mode	4H*4C	4C+OP
打印宽幅 Print Width	3200mm	1600mm
打印速度 PrintSpeed (sqm/h)	草图 4PASS	50m ² /h
	标准 6PASS	30m ² /h
	高精 8PASS	21m ² /h
打印分辨率 Print Resolution	720*1800 DPI	1440DPI
打印材料 Media Type	车贴、壁纸、墙纸、墙布、油画布、透明纱、竹帘 Vinly, Wall Paper, Wall Cloth, Canvas, Bamboo weaving, etc	
材料厚度 Media Thickness	材料厚度≤3mm Max≤3mm	
墨水类型 Ink Type	乳胶环保墨水 Latex Ink	
固化系统 Curing System	热烘干一体风扇 Heating Dryer Integrated fan	
输入格式 Film Format	BMP/TIFF/EPS/PDF/JPEG	
RIP软件 RIP	Photoprint	
数据传送接口 Data Connector	USB3.0	
输入电源 Voltage	220VAC(±10%)单相 50/60 HZ 220VAC(±10%) Single Phase. 50/60 HZ	
机器功耗 Power	15KW	3.7KW
机器尺寸/净重 Machine Size/N.W.	5.0m(L)*1.1m(W)*1.6m(H)/1350KG	2.67m(L)*0.96m(W)*1.6m(H)
包装尺寸/毛重 Packing Size/G.W.	5.1m(L)*1.2m(W)*1.7m(H)/1430KG	2.77m(L)*0.9m(W)*0.9m(H)
环境要求 Environmental Requirement	独立、洁净、低尘、少光照、通风良好的工作间 环境温度:20°C - 25°C相对湿度: 50% - 60% seperated, clean, low dust, well-ventilated, environmental temperature:20°C-25°C relative humidity:50%-60%	

注：以上技术参数如有变动恕不另行通知，以实际设备为准。
Above specification will be changeable without notice

机型：YF-2000T 旗帜机 Textile Flag Printer

机器简介

Introduction of the machine



图片参考：YF-2000T

- ◆ 可制作多种旗帜、广告直喷布料，绿色环保
- ◆ 恒张力高精度送布系统，保证精确平稳送布
- ◆ 工业微电压Epson I3200喷头
- ◆ 增加自动裁切功能
- ◆ 9路自动裁切 4路实时裁切

Can produce a variety of flags, advertising direct spraying fabric Green environmental protection.Constant tension and high precision Feeding system to ensure accurate and stable feeding Industrial micro-voltage Epson I3200 print head Increase automatic cutting function Nine cutting knives automatically cut,four cutting knives operate in real time

行业应用

Industry Application



国旗
National Flag



广告旗
Advertising Flag



沙滩旗
Beach Flag



窗帘
Curtain



被子
Sheets

机器参数

Machine parameters

机型/Model	YF-2000T 旗帜机 YF-2000T Textile Flag Printer		
喷头/Printhead	EpsonI3200		
喷头数量/Print Head number	2	4	
色彩配置/Print Mode	4C	4C	
打印宽幅/Print Width	2000mm		
打印速度 Print Speed (sqm/h)	草图 2PASS	58m ² /h	140 m ² /h
	标准 3PASS	46m ² /h	105 m ² /h
	高精 4PASS	32m ² /h	80 m ² /h
打印分辨率/Print Resolution	1800DPI		
打印材料 Media Type	旗帜布、条幅、广告旗、国旗、窗帘 Banner, Advertising Flag, Flag, Curtain		
材料厚度 Media Thickness	材料厚度≤3mm Max≤3mm		
墨水类型 Ink Type	环保热升华墨水 Sublimation Ink		
固化系统 Curing System	一体显色机 Integrated Heating System		
输入格式/File Format	BMP/TIFF/PDF/JPEG/JPES		
RIP软件 RIP	蒙泰6.0 Maintop 6.0		
数据传送接口/Data Connector	千兆网线 Gigabit etherner		
输入电源 Power	220VAC(±10%) 单相, 50/60HZ 220VAC(±10%) Single Phase, 50/60 HZ		
机器功耗/Power Consumption	7KW		
机器尺寸/净重Machine Size/ . .	3.5m(L)*1.06m(W)*1.5m(H)		
包装尺寸/毛重Packing Size/ . .	3.65m(L)*1.2m(W)*1.65m(H)		
环境要求 Environment Requirement	独立、洁净、低尘、少光照、通风良好的工作间环境温度:20°C - 25°C, 相对湿度:50% - 60% seperated, clean, low dust, well-ventilated,environmental temperature:20°C-25°C relative humidity:50%-60%		

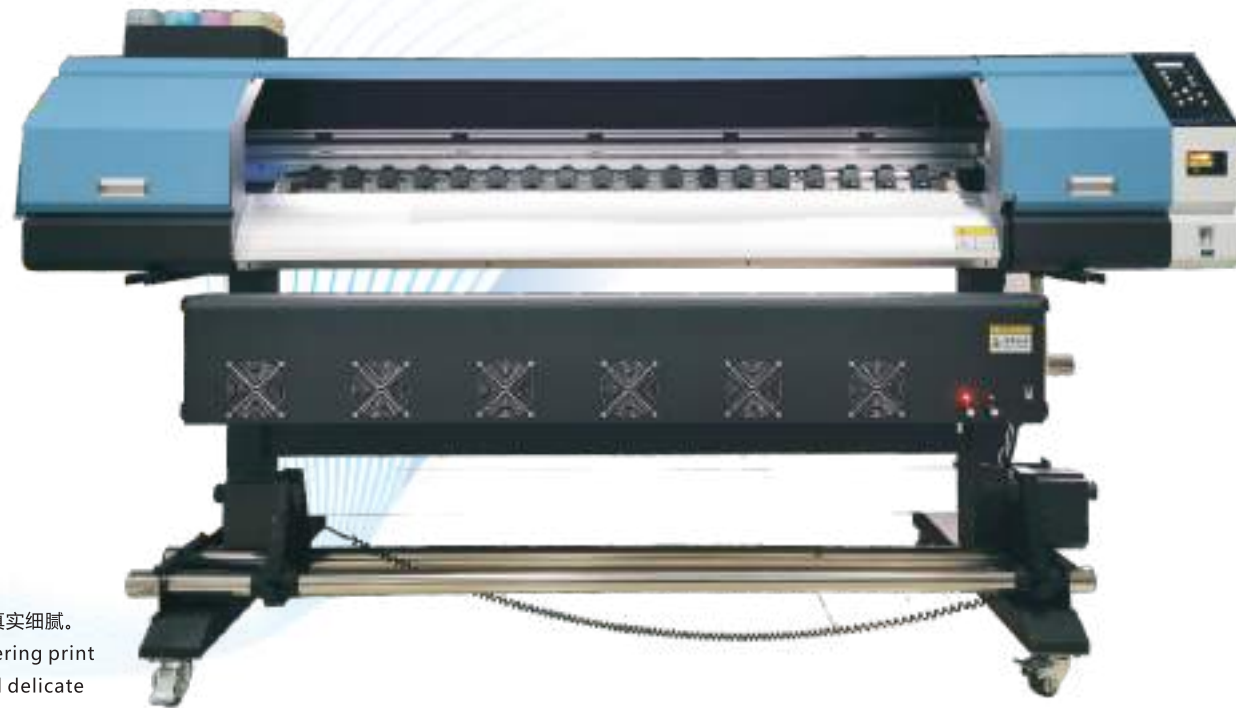
注：以上技术参数如有变动恕不另行通知，以实际设备为准。
Above specification will be changeable without notice

机型：YF-I700 写真机 Eco Solvent Printer

机器简介

Introduction of the machine

- ◆ 采用爱普生I3200原装喷头 (DX5/DX7/XP600可选)
EpsonI3200 Printhead(DX5/DX7/XP600)
- ◆ 高灵敏小车防撞装置
Anti-collision system
- ◆ 可调节喷头小车高度 (≤20mm)
Adjustable head height (≤20mm)
- ◆ 进口静音导轨及伺服一体电机
Imported mute rail and servo integrated motor
- ◆ 铝合金一体清洗墨栈
Big capacity bulk ink system
- ◆ 大功率一体烘干风扇
High-power integrated drying fan
- ◆ 科学的操作界面，简单方便操作。
Scientific operation interface, easy to operate
- ◆ 全新可变墨滴技术和三种羽化打印功能，使打印画面更真实细腻。
New variable ink drop technology and three feathering print functions make the print picture more realistic and delicate



图片参考：YF-1700

行业应用

Industry Application



PP背胶
PP



车贴
Vinyl



艺术画
Art Painting



灯箱
Light Box



广告布
Advertising Cloth

机器参数 Machine parameters

机型 Model	YF-1700			
喷头型号 Print Head	Epson I3200(DX5/DX7/XP600可选)			
喷头数量 Print Head Number	1	2	3	4
色彩配置 Print Mode	4C	2H*4C	3H*4C	4H*4C
打印宽度 Print Width	1600mm			
打印速度 PrintSpeed (sqm/h)	草图 2PASS	/		106 m ² /h
	生产 3PASS	33 m ² /h	43 m ² /h	54 m ² /h
	标准 4PASS	22 m ² /h	32 m ² /h	43 m ² /h
	高精 6PASS	11 m ² /h	24 m ² /h	28 m ² /h
打印分辨率 Print Resolution	1440dpi			
打印材料 Media Type	车贴、灯箱布、网格布、单透贴、壁纸、油画布、相纸、PP等 Vinyl, Flex Banner, Mesh, One Way Vision, Paper, Wall Paper, Coated Banner, Photo Paper etc.			
材料厚度 Media Thickness	材料厚度≤3mm Max≤3mm			
墨水类型 Ink Type	环保弱溶剂/环保热升华墨水/水性墨水 Eco-Solvent Ink/Sublimation ink/Water-based ink			
固化系统 Curing System	热烘干+冷风扇 Heating Dryer+Cooling Fan			
输入格式 Film Format	BMP/TIFF/EPS/PDF/JPEG			
RIP软件 RIP	锐彩4.4亿方版/蒙泰/Photoprint Ultra Print V4.4 YIFANG Version/Photoprint/Maintop			
数据传送接口 Data Connector	千兆网线 Gigabit ethernet			
输入电源 Voltage	220VAC(±10%)单相 50/60 HZ 220VAC(±10%) Single Phase. 50/60 HZ			
机器功耗 Power	1500W			
机器尺寸/净重 Machine Size/N.W.	2.7m(L)*0.8m(W)*1.2m(H)/250KG			
包装尺寸/毛重 Packing Size/G.W.	2.8m(L)*0.75m(W)*0.7m(H)/280KG			
环境要求 Environmental Requirement	独立、洁净、低尘、少光照、通风良好的工作间 环境温度:20℃ - 25℃相对湿度: 50% - 60% seperated, clean, low dust, well-ventilated environmental temperature:20℃-25℃ relative humidity50% -60% (Non-condensation)			

注：以上技术参数如有变动恕不另行通知，以实际设备为准。
Above specification will be changeable without notice

机型: 2000D/3200D 写真机 Eco Solvent Printer

机器简介

Introduction of the machine

- ◆ 采用爱普生I3200原装喷头 (DX5/DX7/XP600可选)
EpsonI3200 Printhead(DX5/DX7/XP600)
- ◆ 高灵敏小车防撞装置
Anti-collision system
- ◆ 可调节喷头小车高度 (≤20mm)
Adjustable head height (≤20mm)
- ◆ 进口静音导轨及伺服一体电机
Imported mute rail and servo integrated motor
- ◆ 铝合金一体清洗墨栈
Big capacity bulk ink system
- ◆ 大功率一体烘干风扇
High-power integrated drying fan
- ◆ 科学的操作界面, 简单方便操作。
Scientific operation interface, easy to operate
- ◆ 全新可变墨滴技术和三种羽化打印功能, 使打印画面更真实细腻。
New variable ink drop technology and three feathering print functions make the print picture more realistic and delicate



参考图: YF-2000

行业应用

Industry Application



PP背胶
PP



车贴
Vinyl



艺术画
Art Painting



灯箱
Light Box



广告布
Advertising Cloth

机器参数 Machine parameters

机型 Model	YF-2000		YF-3200	
喷头型号 Print Head	Epson I3200(DX5/DX7/XP600 可选)			
喷头数量 Print Head Number	4	8	2	4
色彩配置 Print Mode	4H*4C	8H*4C	2H*4C	4H*4C
打印宽度 Print Width	1600mm			
打印速度 PrintSpeed (sqm/h)	草图 2PASS	/		
	生产 3PASS	84 m ² /h	218 m ² /h	42 m ² /h
	标准 4PASS	55 m ² /h	107 m ² /h	28 m ² /h
	高精 6PASS	36 m ² /h	85 m ² /h	18 m ² /h
打印分辨率 Print Resolution	1440dpi			
打印材料 Media Type	车贴、灯箱布、网格布、单透贴、壁纸、油画布、相纸、PP等 Vinyl, Flex Banner, Mesh, One Way Vision, Paper, Wall Paper, Coated Banner, Photo Paper etc.			
材料厚度 Media Thickness	材料厚度≤3mm Max≤3mm			
墨水类型 Ink Type	环保弱溶剂/环保热升华墨水/水性墨水 Eco-Solvent Ink/Sublimation ink/Water-based ink			
固化系统 Curing System	热烘干+冷风风扇 Heating Dryer+Cooling Fan			
输入格式 Film Format	BMP/TIFF/EPS/PDF/JPEG			
RIP软件 RIP	锐彩4.4亿方版/蒙泰/Photoprint Ultra Print V4.4 YIFANG Version/Photoprint/Maintop			
数据传送接口 Data Connector	千兆网线 Gigabit ethernet			
输入电源 Voltage	220VAC(±10%)单相 50/60 HZ 220VAC(±10%) Single Phase, 50/60 HZ			
机器功耗 Power	1500W	4500W	4500W	
机器尺寸/净重 Machine Size/N.W.	3.15m(L)*1.0m(W)*1.15m(H)	3.45m(L)*1.3m(W)*1.6m(H)	4.5m(L)*1.1m(W)*1.3m(H)	
包装尺寸/毛重 Packing Size/G.W.	3.3m(L)*0.8m(W)*0.8m(H)	3.75m(L)*1.5m(W)*2.0m(H)	4.7m(L)*1.0m(W)*1.5m(H)	
环境要求 Environmental Requirement	独立、洁净、低尘、少光照、通风良好的工作间 环境温度:20℃ - 25℃相对湿度: 50% - 60% seperated, clean, low dust, well-ventilated environmental temperature:20°C-25°C relative humidity50% -60% (Non-condensation)			

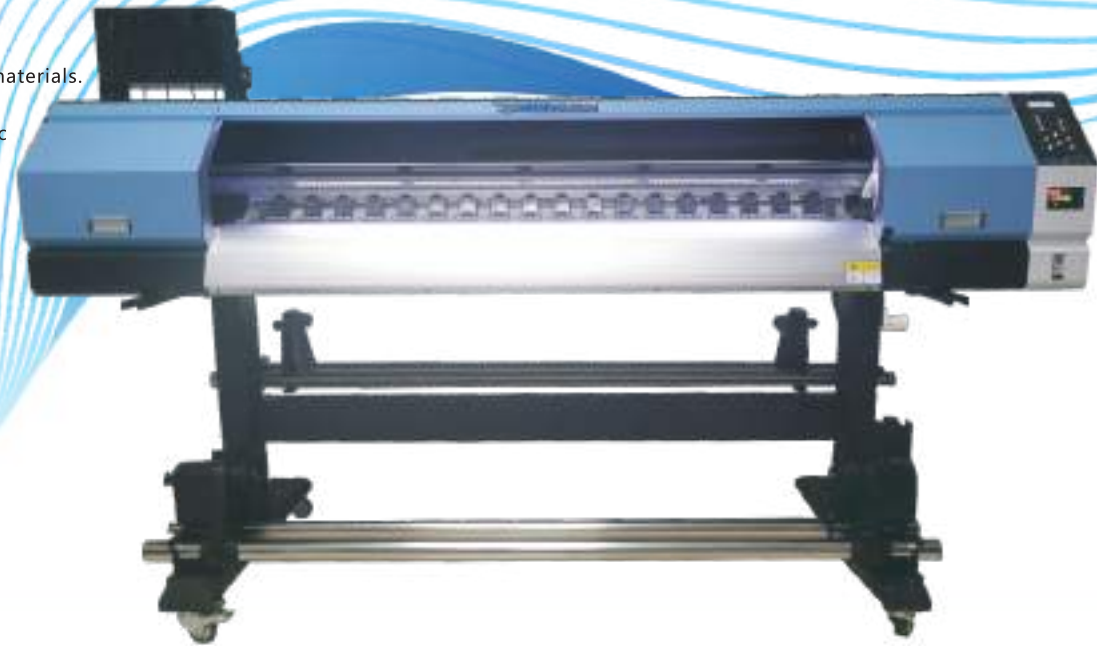
注: 以上技术参数如有变动恕不另行通知, 以实际设备为准。
Above specification will be changeable without notice

机型：YF-1700UV/YF-2000UV/YF-3200UV

机器简介

Introduction of the machine

- ◆ 采用爱普生喷头
Adopt Epson print head
- ◆ 可调节喷头小车高度 (≤8mm),方便客户适应更多打印介质。
Adjustable carriage height (≤8mm), convenient for customers to print various materials.
- ◆ 自动升降清洗墨栈, 超大容量连供系统(自动清洗, 封闭喷头, 使喷头始终处于良好状态)
Automatic lifting and cleaning station, large capacity bulk ink system (automatic cleaning sealed print head, make the head always in good condition).
- ◆ 加宽式防静电压轮, 超宽的前加热圆弧。
Wide anti-static pinch roller, superwide front heating arc.
- ◆ 恒张力高精度送布系统, 保证精确平稳送布。
Constant tension high-precision feeding system to ensure accurate and stable feeding.
- ◆ 科学的操作界面, 简单方便操作。
Scientific operation interface, convenient to operate.
- ◆ LED灯固化系统, 更加节能、寿命更久使打印材料不受温度影响。
LED curing system, more energy-saving, longer life, the printed materials are not affected by temperature.
- ◆ 全铝合金一体升降墨栈
Aluminum alloy integrated cleaning station.
- ◆ 应用了白墨独立搅拌系统。
White ink mixing system.
- ◆ 进口静音导轨, 全铝型材横梁, 保证高稳定性高品质输出
Imported mute rail, aluminum beam, guarantee high stability and high quality output



参考图: YF-1700UV

行业应用

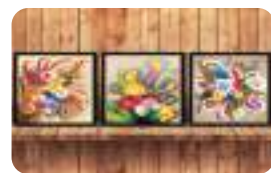
Industry Application



PP背胶
PP



车贴
Vinyl



艺术画
Art Painting



灯箱
Light Box



广告布
Advertising Cloth



皮革
Leather

机器参数

Machine parameters

机型 Model	YF-1700UV			YF-2000UV		YF-3200UV		
喷头型号 Print Head	I3200(DX5/DX7可选)			I3200(DX5/DX7可选)		I3200(DX5/DX7可选)		
喷头数量 Print Head Number	1	2	3	2		2	4	
色彩配置 Print Mode	4C	2H*4C	3H*4C	2H*4C	4C+W	2H*4C	4H*4C	
打印宽幅 Print Width	1600mm			1900mm		3100mm		
打印速度 Print Speed (sqm/h)	草图 4PASS	33m ² /h	43m ² /h	54m ² /h	48m ² /h	36m ² /h	54m ² /h	65m ² /h
	标准 6PASS	22m ² /h	32m ² /h	43m ² /h	36m ² /h	25m ² /h	43m ² /h	48m ² /h
	高精 8PASS	11m ² /h	24m ² /h	28m ² /h	28m ² /h	14m ² /h	28m ² /h	32m ² /h
打印分辨率 Print Resolution	1440dpi							
打印材料 Media Type	车贴、灯箱布、网格布、单透贴、壁纸、油画布、相纸、PP等 Vinyl, Flex banner, Mesh, One way vision, Textile, Wall paper, Canvas, Non-woven fabric, Photo paper, PP, Light sheet etc.							
材料厚度 Media Thickness	材料厚度≤3mm Max≤3mm							
墨水类型 Ink Type	爱普生环保UV墨水 Epson UV ink							
固化系统 Curing System	LED固化系统 LED water cooling							
输入格式 Film Format	BMP/TIFF/EPS/PDF/JPEG							
RIP软件 RIP	蒙泰/PP Maintop/Photoprint							
数据传送接口 Data Connector	USB2.0							
输入电源 Voltage	220VAC(±10%)单相, 50/60 HZ							
机器功耗 Power	1000W			1500W		1500W		
机器尺寸/净重 Machine Size/N.W.	2.7m(L)*0.8m(W)*1.2m(H)/250KG			3.0m(L)*0.8m(W)*1.2m(H)/350KG		4.5m(L)*1.1m(W)*1.3m(H)/750KG		
包装尺寸/毛重 Packing Size/G.W.	2.8m(L)*0.75m(W)*0.7m(H)/280KG			3.1m(L)*0.75m(W)*0.7m(H)/380KG		4.7m(L)*1.0m(W)*1.5m(H)/800KG		
环境要求 Environmental Requirement	独立、洁净、低尘、少光照、通风良好的工作间 环境温度:20℃ - 25℃相对湿度: 50% - 60% seperated, clean, low dust, well-ventilated environmental temperature:20℃-25℃ relative humidity:50%-60% (Non-condensation)							

注: 以上技术参数如有变动恕不另行通知, 以实际设备为准。
Above specification will be changeable without notice